



OWNER LETTER

SAFETY RECALL NOTICE (NHTSA Recall No. 10E-056)

December 15, 2010

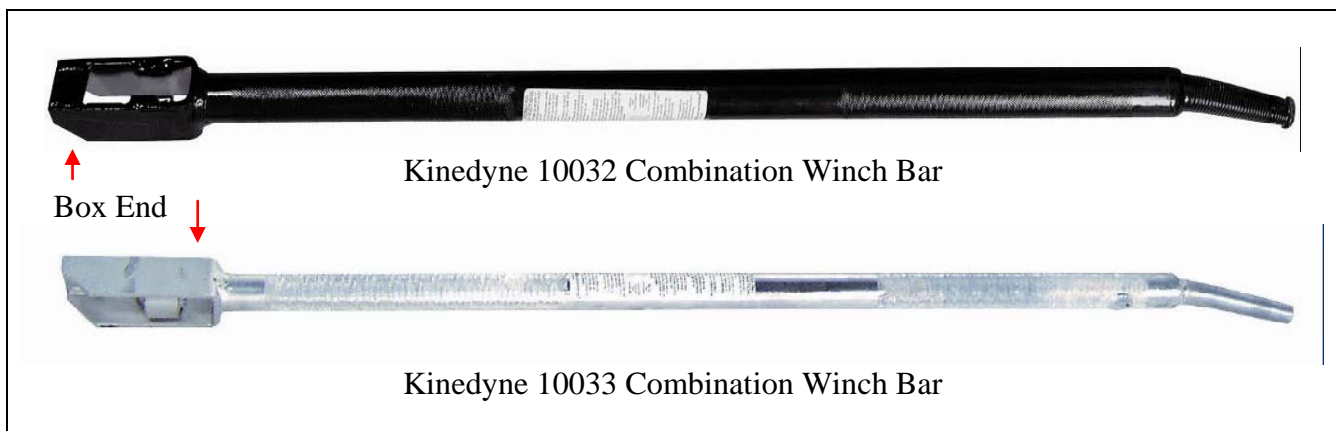
Recall of Certain Combination Winch Bars
Part Numbers: 10032 (Black) and 10033 (Chrome)
Shipped January 1, 2010 – October 25, 2010

Dear Valued Customer:

This notice is being sent to you in accordance with the requirements of the National Traffic and Motor Vehicle Safety Act. Kinedyne Corporation has decided that a defect which relates to motor vehicle safety exists in certain combination winch bars, Part Number 10032 (Black) and Part Number 10033 (Chrome) shipped from January 1, 2010 through October 25, 2010. Kinedyne is voluntarily recalling the affected product.

What Products Are Involved?

This voluntary recall involves Kinedyne combination winch bars (see Picture A), Part Numbers 10032 (black) and 10033 (chrome) shipped from January 1, 2010 through October 25, 2010. The recalled winch bars can be identified by the absence of two lateral welds on the box end of the bars used for releasing lever type chain tensioners (see Picture B).



Picture A - For further information, please go to www.kinedyne.com.

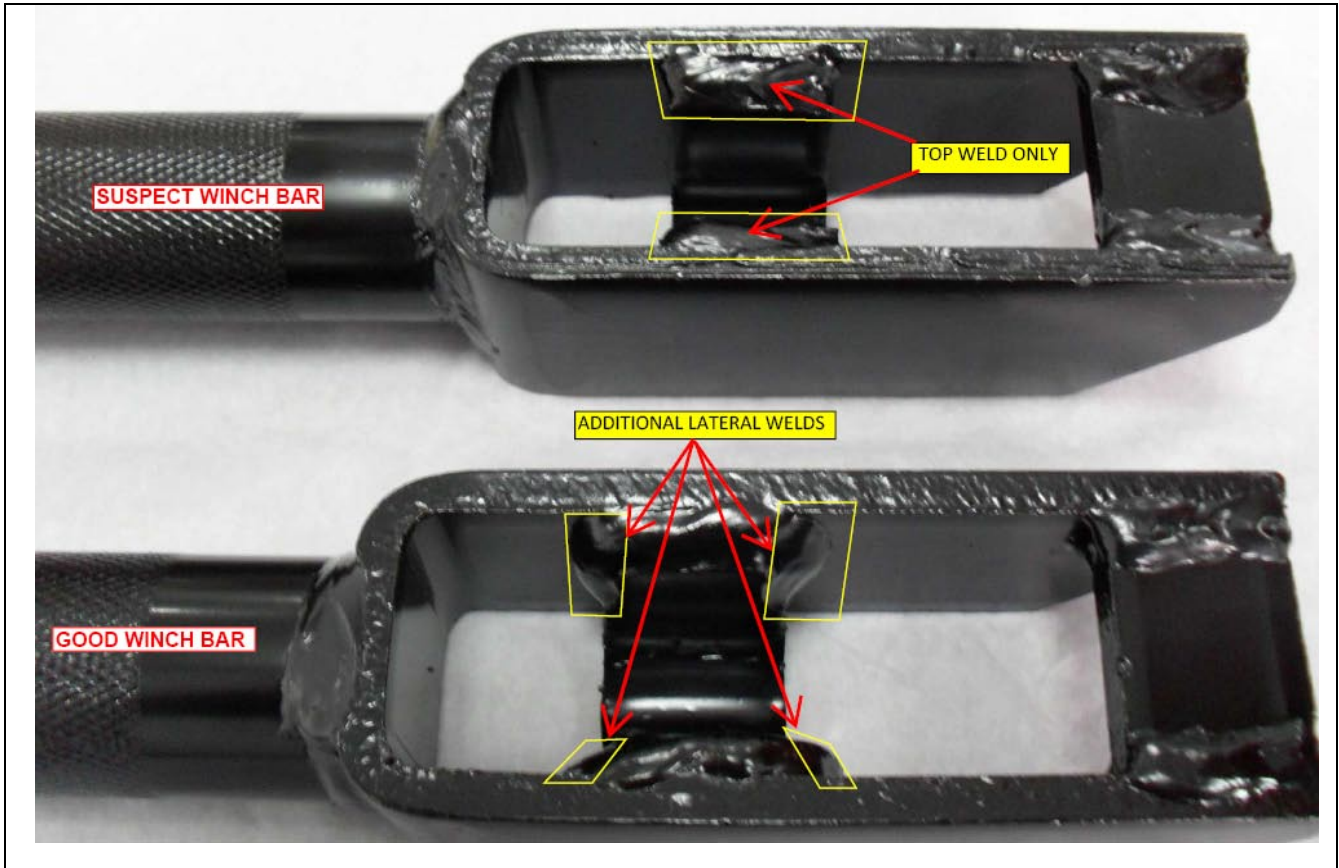
□ Kinedyne Corporation
151 Industrial Parkway
Branchburg, NJ 08876-3451
Tel: 908-231-1800
Fax: 908-231-1379

□ Kinedyne Corporation
1104 Washington Ferry Road
Prattville, AL 36067-4849
Tel: 334-365-2919
Fax: 334-361-1665

□ Kinedyne Corporation
3701 Greenway Circle
Lawrence, KS 66046-5442
Tel: 785-841-4000
Fax: 785-841-3668

□ Kinedyne Corporation
640 Maestro Drive, Suite 102
Reno, NV 89511-2207
Tel: 775-853-1888
Fax: 775-851-2067

□ Kinedyne Canada Limited
160 Dynamic Drive
Toronto, Ontario M1V 5A5
Tel: 416-291-7168
Fax: 416-291-0814

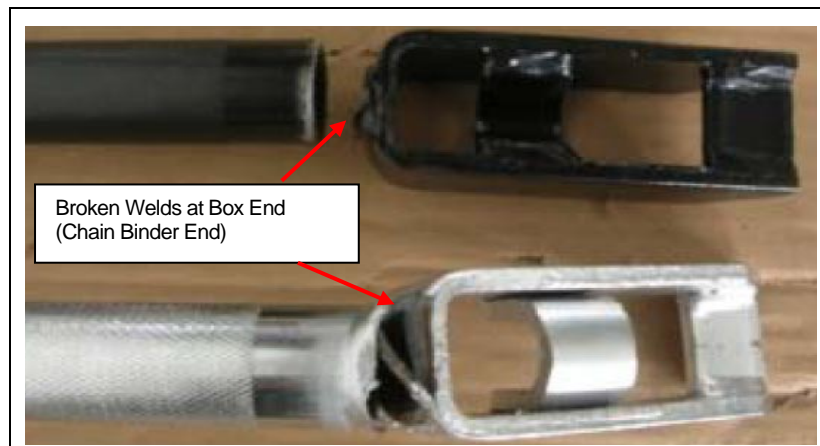


Picture B - Chain Binder (Box End) of 10032 Combination Winch Bar

IMPORTANT NOTE: Parts that have the distinguishing feature of the “Good” Winch Bar shown above were produced prior to 2010 and are not subject to this recall. It is important to note that this distinguishing feature is not the anomaly itself, but only an easy identifier of the suspect production lot.

What is the Problem?

As a result of a manufacturing anomaly, the subject winch bars may be prone to fractures at the weld that joins the steel bar to the box end (i.e., the end used to release chain lever binders), as indicated in Picture C.



Picture C – Weld locations prone to fractures.

This anomaly may cause the weld joint to fail and the box end to abruptly separate from the bar during normal use. If the weld fails unexpectedly, the winch bar could strike the user or cause the user to lose his or her balance and fall (especially when the user is positioned on top of the trailer or its cargo during use), potentially causing personal injury.

What You Should Do?

If you own one of the subject combination winch bars, with the distinguishing feature identified in Picture B above as the “suspect” bar, you are advised to immediately stop using the product and return it to the point of purchase for replacement.

If you have any questions about this recall, please call Kinedyne Customer Service at 1-800-848-6057 or email customerservice@kinedyne.com.


If Kinedyne fails or is unable to provide a refund or free replacement within a reasonable time, you may submit a complaint to the Administrator, National Highway Traffic Safety Administration, 1200 New Jersey Avenue, SE, Washington, DC 20590; or call the toll-free Vehicle Safety Hotline at 1-888-327-4236 (TTY: 1-800-424-9153); or go to <http://www.safercar.gov>.

Federal regulations require the following notice: “Federal regulations require any lessor receiving this letter to forward it to the lessee within 10 days.”

* * *

We apologize for any inconvenience this may cause you, but we are taking this action in the interest of your personal safety and satisfaction with our products. Thank you for your cooperation.

Sincerely,



Peter Miko
Global Quality Director
Kinedyne Corporation